

*art*matters

september 2010

issue no 8



art
works

www.artworksinfo.org.uk

thoughts from the chair

One of the great delights of being part of **artworks** is the sense of anticipation that goes with the opening of the annual exhibition each September. That sense of eagerly awaiting the transformation of an empty barn into a living space awash with vibrant art is something that never ceases to excite year on year. Seeing artists strike out in new directions is always an integral part of this annual celebration and welcoming new members on board greatly enhances the creative package we offer.



This year we welcome *Jazz Green* who explores the colours and textures found in environmental erosion and decay, *Mike Wiggins* whose monochrome drawings delve into detailed but distorted perceptions of reality and *Debbie Ayles*,

whose fascination with East Anglian barns should find a sympathetic back-drop. We also welcome back *Julia Sorrell* with her unique microscopic approach to drawing of natural forms and *Chris Evans* with his subtly evocative intaglio prints.

Many **artworks** printmakers felt passionately about the place of original printmaking as part of their artistic practice, where the hand of the artist has had a direct input into the print produced. In recognition of this aspect of creative practice, **artworks** has decided only to sell *original* prints. I hope you will find this commitment to originality refreshing.

In addition to the main exhibition and the well-stocked shop, to further enhance your visit, there will be our daily **demonstrations** by artworks' artists providing insights into various aspects of painting, printmaking and sculpture. For a full timetable, log on to our website (www.artworksinfo.org.uk) or pick up a paper copy from the desk when you visit. Our very popular **Artists Making an Exhibition of Themselves** (AMET) evening will this year be held on Saturday 2 October (6-9 pm), a wonderful opportunity to ask questions and embark on a voyage of artistic discovery. We are grateful to **The Curwen Studio** for sponsoring the evening.



Overy Cackle Strand, linocut Penny Bhadresa

And last but by no means least, our **Mini Artworks Prize Draw** will hopefully tempt you to have a flutter with its usual array of 30 stunning original 'artworks' to be won, sure in the knowledge that you will be helping to support our chosen charity for 2010, East Anglia's Children's Hospices' Treehouse Appeal.

I hope you enjoy reading this issue of the newsletter packed with news of artworks' members' artistic adventures and discoveries. On behalf of all our artists, welcome to our 11th annual exhibition.

Penny Bhadresa

artworks' artists rise to the challenge

Late in 2009 several of the Artworks' members were invited to take part in a fund raising art event for St Elizabeth Hospice in Ipswich. **Janet French**, **Elaine Nason** and **Eleonora Knowland** rose to the challenge of producing an original artwork on a deckchair canvas. The canvasses were then mounted on to full size deckchair frames to produce an exciting and innovative touring exhibition. Altogether, 46 artists, illustrators, writers and actors have taken part in the project which has produced a very dynamic and varied collection of work.

The project launch took place at Wingfield Barns in April. Celebrated author **Meg Rosoff** and children's book illustrator **Helen Oxenbury** were among those present. Guests were aptly served fish and chips followed by ice-cream against the lovely backdrop of 46 striking deckchairs.

The Suffolk Coastal Deckchair collection is being exhibited at a number of locations throughout East Suffolk from April to September 2010 before being auctioned at Glemham Hall, Suffolk on 1 October 2010. For information on how to buy a ticket to the auction or place a reserve bid for a deckchair visit www.suffolkcoastaldeckchairs.org.uk.

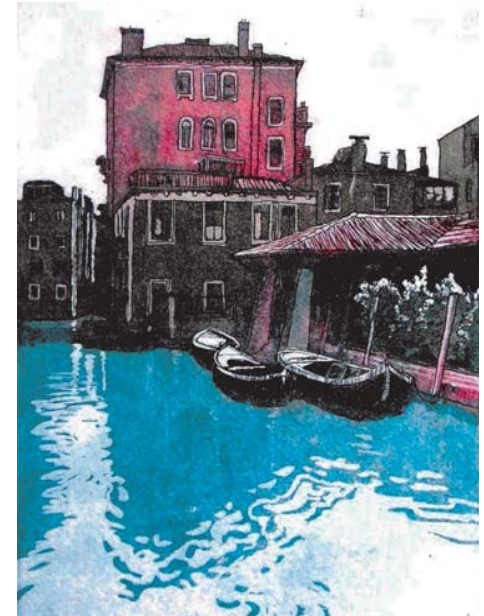


Janet French with her St Elizabeth Hospice design

bankside gallery beckons

The *Norwich Print Fair*, whose main exhibition is held in Norwich every September, was this year invited to exhibit at the prestigious Bankside Gallery (next to Tate Modern) in London. **Chris Evans**, **Chris Gamble** and **Elaine Nason**, three very excited artworks' artists, were amongst the thirty-two printmaker's whose work

was selected. The beautifully displayed exhibition which ran from 22nd to 27th June, was well attended. The exhibited work which covered a wide variety of print processes - intaglio, relief and planographic - was a great success and by all accounts, a feather in their cap. Over the years, the Norwich Print Fair (since its inception in 1995) has become one of the best loved contemporary groups in East Anglia selling original, hand-made prints.



Venice I, etching

Chris Evans

simply blown away

Last November, I was experiencing India for the first time. An impact I could not have envisaged, it was an onslaught on the senses and all my preconceptions. I was simply overwhelmed by the beauty and gamut of prevailing contrasts, the clothes that exuded wonderful colours, the people that radiated warmth and kindness, the landscape, both physical and cultural, that communicated splendour. After a most enjoyable 9-day tour in northern India, I planted myself in beautiful Udaipur, City of the Lakes, in southern Rajasthan, where the slower pace gave me time to absorb more of my surroundings. A feast for the eye, busily I captured images on camera, made notes and even managed to do some sketching.

The culmination of my trip was to visit a



Bollywood Jumbo

Gabrielle Stoddart

village in the hills around Udaipur with the charity *Plan International* (www.plan-uk.org) and to see for myself the work they undertook jointly with a local charity *Seva Mandir* (www.sevamandir.org) in supporting children. The projects on health, education and water reaching out to some 700 villages and settlements, can only be described as remarkable. The welcome I received will remain with me for a long time to come.

On my return, I have attempted to recapture the memories of Rajasthan in my drawings and paintings, distilling and simplifying my reactions. I hope my work will have evoked some of these.

Gabrielle Stoddart

batik guild comes to east anglia

Each year, the internationally renowned Batik Guild holds an annual exhibition in each region of the UK in turn. This year the Batik Guild is to hold their annual exhibition in East Anglia. And *artworks'* artist Helen Dougall, herself a distinguished batik artist, is helping to organise the national exhibition *Imagination: Contemporary Batik Art* at Harleston Gallery in Norfolk this autumn.

A panel has selected the work of 26 batik artists (including Helen's), from Belgium, Holland, Italy, Austria, Belarus as well as the UK, and promises to be an exciting showcase of the best of batik art. For further information about the art of batik and the forthcoming exhibition, please visit www.batikguild.org.uk.



Coastal Erosion, Benacre, batik

Helen Dougall

the lure of lithography

Several artworks' members descended on the Curwen Studio, the famous printing studio near Cambridge in July.



Jenny Roland and Michael Papworth, our hosts

After an excellent introduction illustrated with examples, some by well known artists, Henry Moore, John Piper, Paul Hogarth, Mark Hearld, of how tonal and textural effects and the overprinting of colours could be achieved in lithography, we were invited to make our own designs on translucent draft film.



Enthusiastically, members set about their task using pastels, charcoal, felt tip pens, paints, rubbings, cut-outs, fabric, anything so long as it created opaque marks. Michael assembled everyone's artwork onto a large sheet, and transferred it onto a plate using UV light. After final corrections, the plate was ready to print from on the big offset lithographic press.



Excited, we watched as the press rolled forward inking the plate, and back transferring the designs onto paper. We had the satisfaction of coming away with our own edition of nine prints. And a day we all found most inspiring. Everyone wanted to go back! To arrange a visit log on to www.thecurwenstudio.co.uk. **RB**

a printing time capsule

Opening the door of the *Palazzo della Pesceria* in the Umbrian town of *Città di Castello*, we stepped into this huge room with ancient printing presses, the heady smell of printing ink and all the accoutrements of an active print workshop. This is the only printing



works in the world run by the same family since it was opened in 1799 by printers Donati and Carlucci. A group of some twenty artists from as far afield as

Australia were absorbed in various types of printmaking under the benevolent direction of the studio's seventh generation owner, Giovanni Ottaviani. It is part museum with a wealth of fascinating archive material, but also very much a working print studio attracting artists who want to use the old techniques of engraving on wood or metal or drawing on stone for lithography. It is well worth a visit if ever you are in this part of Italy (see www.grifanidonati.it). **PB**

many congratulations to liz

Artworks' sculptor Liz Waugh McManus has been selected for *British Glass Biennale*, UK's top contemporary glass showcase and a highlight of the International Festival of Glass. Competition for selection was fierce, with the jury selecting 96 pieces by 62 artists from 449 works submitted by 202 artists. What an achievement! Exhibition at the Ruskin Glass Centre, Stourbridge, 23 Aug - 11 Sept. For details: www.biennale.org.uk.

eastern open success

Once again, two of Artworks' artists, Chris Gamble and Lynn Hutton, were successful in being selected for this year's 41st Eastern Open competition in the Spring. Out of a total of 700 works from 300 artists submitted, 180 artworks representing 140 artists were chosen.



Whatever (detail)

Chris Gamble

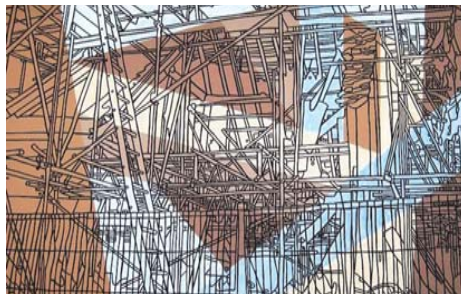
The annual Eastern Open, now East Anglia's largest open submission of contemporary art, continues to be one of the artistic highlights of the year and draws together a wide range of new work by established and emerging visual artists. The invited selectors are changed each year and this year the selectors Dr Richard Gant of the Art Department at John Moores University, artist Richard Layzell, and Claire Wilcox of Victoria & Albert Museum, provided the very inspiring overview of East Anglian art. For details visit www.kingslynnarts.co.uk/galleries.

new in 2010

Debbie Ayles

painter/printmaker

Since completing a degree in Art and Design at Colchester Institute in 2002, Debbie has exhibited widely. Between 2002-6, she worked with Dr Klaus Podoll on *migraine art*, and with Professor Wilkins of Essex University on 'Aversion to Contemporary Art' which resulted in computer software to reduce visual stress in the environment.



Essex Support Structure

Debbie Ayles

'I have a continuing fascination for the ramshackle barns of East Anglia. Always starting with observed reality, I re-evaluate them through structure, form and shape. By juxtaposing lines and layers to make images more complex, I aim to convey movement and shifting view points for a richer visual experience. Colour as well as intricate patterns are an important part of my work.' **DA**

Jazz Green

painter/printmaker



Farmscape I 2010

Jazz Green

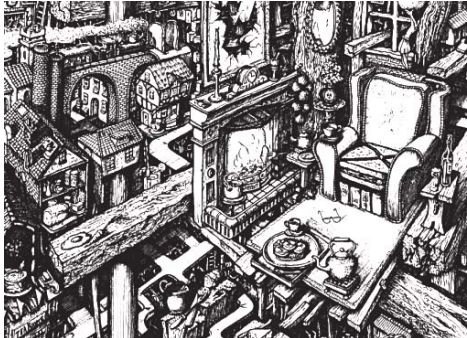
Jazz studied fine art at Farnham and The Royal College of Art, specialising in printmaking. Her travels around Greece and into Turkey inspired an enduring fascination with archaeological artefacts, patinas and eroded surfaces. The East Anglian landscape with its myriad changes, in macro or panorama, natural or manmade, is a constant source of inspiration.

'I combine painting, printmaking, collage and papermaking in my art - exploring elements of colour and texture found in environmental erosion and decay. I create abstract, textural minimalist artworks which resonate with an awareness of the landscape and the seasons, often with allusions to earth, sky or the horizon, taking much inspiration from the beauty of imperfection and transience, a wabi-sabi aesthetic.' **JG**

Michael Wiggins

artist

Michael developed an artistic flair when young, selling his first paintings at sixteen. He worked in various industries until 2002 when circumstances led to a re-emergence of his creativity. He is now undertaking what he calls 'a late apprenticeship', studying the visual arts and excitingly absorbing as much as possible.



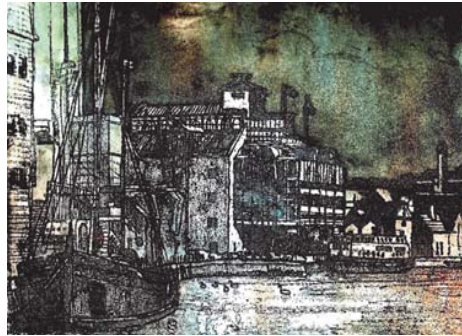
Afternoon Tea (detail)

Michael Wiggins

'Working in all media, I am at present concentrating on monochrome drawings in pen and ink, exploring detailed but distorted perceptions of reality. From the initial idea of shape and form, I allow my work to evolve by continual contemplation until a more defined structure or theme emerges. My aim is to stimulate and tempt the viewer to journey deeper.' **MW**

Chris Evans

printmaker



Ipswich Docks, etching

Chris Evans

Chris studied illustration and fabric design at St Martin's School of Art and graphic design at the London College of Printing. He went into advertising before becoming an in-house book-jacket designer for a London publishing company. He became fully freelance on moving to Suffolk. He now concentrates on printmaking and has his own press for producing etchings, monoprints and relief prints.

'Most of my work is expressed in the form of print, particularly etching. Growing up in London, I greatly appreciated architecture with its rich textures and colours. The countryside too is a source of inspiration. I enjoy drawing people involved in everyday activities.' **CE**

Julia Sorrell

painter

Julia grew up in a family of artists and studied at Goldsmith's College and the Royal Academy Schools. Julia has developed her own approach to the drawing of natural forms such as plants, rocks, shells and wood. Fundamentally, she is a figurative artist with a strong belief in drawing. She has exhibited very widely.



Woodscape IV

Julia Sorrell

'As a child one looks at objects such as clouds or trees and imagination plays tricks turning them into chariots, caricature faces, demons or whatever. Within a shell there could be a landscape, a ripple in a stone could be a ploughed furrow in a field, a rotted stump of wood could be a rock face. As an artist I try to harness these qualities in my work.' **JS**

future turner prize winners?

Roger Gamble spent an exhilarating day with the pupils of Gt Finborough School, near Stowmarket presenting a workshop on acrylics and the use of bold colour and design. This is what Roger had to say, *'The children were terrific, fast learners and brimming with ideas and invention, they kept me on my toes and exhibited the joy and wonder of creating images from their imagination. I drove home on a real high, I think I gained as much from the day as they did!'*



This year, **artworks'** partnered with Lawshall, Gt Finborough and Gt Whelnetham primaries and Ixworth Middle schools. A selection of the childrens' work produced during workshops will be on show at Blackthorpe Barn in September. If, as a school, you are interested in our schools' programme, please log on to our **website** to apply now for the 2011/2012 school year.

the amet evening

Our very popular **Artists Making an Exhibition of Themselves** evening (6-9 pm) when artworks' artists set up temporary studios in front of their work is on **2 October**, the last Saturday of the exhibition. The Curwen Studio will also have a stand devoted to lithographic techniques. *Here is a wonderful opportunity to ask questions and embark on a voyage of artistic discovery.*

Tickets: Adults £3 at the door;
students and under 16s **free**
Bar serving wine and soft drinks



The AMET Evening is kindly supported
by the **CURWEN STUDIO**
(www.thecurwenstudio.co.uk)



artworks www.artworksinfo.org.uk

Set up in 2000, **artworks** comprises 30 contemporary East Anglian artists ranging from painters and printmakers to sculptors and an installation artist. Its diverse and inspiring shows have been vibrant and wide-ranging. Artworks' annual exhibition in September is held at the impressive Blackthorpe Barn, just off junction 45 on the A14 at Rougham, three miles east of Bury St Edmunds in Suffolk.

Valerie Armstrong Mike Ashley Debbie Ayles Bernard Baker Penny Bhadresa Rasik Bhadresa (admin) Gillian Crossley-Holland Verena Daniels Helen Dougall Christine Dovey (secretary) Chris Evans Hilary Evans Janet French Chris Gamble Roger Gamble Jenny Goater Jazz Green Ann Hart Lynn Hutton Alison Jones Eleonora Knowland Mac McCaughan Christine McKechnie Katie Millard Elaine Nason Anne Paton Doug Patterson Eileen Revett Colin Slee Julia Sorell Gabrielle Stoddart Constance Stubbs Liz Waugh McManus Michael Wiggins

artmatters compiled, designed and edited by **Rasik Bhadresa**; a pdf version at www.artworksinfo.org.uk/artmatters